

3745-1-09 **Scioto river drainage basin.**

- (A) The water bodies listed in table 9-1 of this rule are ordered from downstream to upstream. Tributaries of a water body are indented. The aquatic life habitat, water supply and recreation use designations are defined in rule 3745-1-07 of the Administrative Code. The state resource water use designation is defined in rule 3745-1-05 of the Administrative Code. The most stringent criteria associated with any one of the use designations assigned to a water body will apply to that water body.

- (B) Figure 1 of the appendix to this rule is a generalized map of the Scioto river drainage basin. A generalized map of Ohio outlining the twenty-three major drainage basins and listing associated rule numbers in this chapter is in figure 1 of the appendix to rule 3745-1-08 of the Administrative Code.

- (C) RM, as used in this rule, stands for river mile and refers to the method used by the Ohio environmental protection agency to identify locations along a water body. Mileage is defined as the lineal distance from the downstream terminus (i.e., mouth) and moving in an upstream direction.

- (D) The following symbols are used throughout this rule:
 - * Designated use based on the 1978 water quality standards.

 - + Designated use based on the results of a biological field assessment performed by the Ohio environmental protection agency.

 - o Designated use based on justification other than the results of a biological field assessment performed by the Ohio environmental protection agency.

Table 9-1. Use designations for water bodies in the Scioto river drainage basin.

Water Body Segment	Use Designations												Comments	
	S R W	Aquatic Life Habitat						Water Supply			Recreation			
		W H	E W H	M W H	S S H	C W H	L R W	P W S	A W S	I W S	B W	P C R		S C R
Scioto river - at RM 33.6		+						o	+	+		+	PWS intake - U.S. Enrichment (emergency intake)	
- Greenlawn dam (RM 129.8) to the mouth		+							+	+		+		
- Olentangy river (RM 132.3) to Greenlawn dam				+					+	+		+	ECBP ecoregion - impounded	
- Dublin rd. WTP dam (RM 133.4) to the Olentangy river (RM 132.3)		+							+	+		+		
- O'Shaughnessy dam (RM 148.8) to the Dublin rd. WTP dam		+						+	+	+		+	PWS intake - Columbus	
- at RM 180.04		+						o	+	+		+	PWS intake - Marion	
- all other segments		+							+	+		+		
Pond creek		+							+	+		+		
Dry run		+							+	+		+		
Wolf run		*							*	*		*		
Carroll run		*							*	*		*		
Sheep Pen run		*							*	*		*		
Scioto Brush creek - headwaters to st. rte. 32 (RM 33.55)		+							+	+		+		
- st. rte. 32 to the mouth				+					+	+		+		
Duck run		+							+	+		+		
Sweeney run				+					*	*		*		
McCullough creek		+							+	+		+		

Table 9-1. Use designations for water bodies in the Scioto river drainage basin.

Water Body Segment	Use Designations												Comments	
	S R W	Aquatic Life Habitat						Water Supply			Recreation			
		W H	E W H	M W H	S S H	C W H	L R W	P W S	A W S	I W S	B W	P C R		S C R
East branch		+							+	+		+		
Unnamed tributary (East branch RM 2.42)			+						+	+		+		
Unnamed tributary (East branch RM 3.35)		+							+	+		+		
Unnamed tributary (McCullough creek RM 2.50)		+							+	+		+		
Bear creek		+							+	+		+		
Saw Pit run		+							+	+		+		
Watts run			*						*	*		*		
Long fork		+							*	*		*		
Right fork		+							*	*		*		
Straight fork		+							*	*		*		
Left fork			+						*	*		*		
Slate run			*						*	*		*		
Stony run			*						*	*		*		
Davis run			*						*	*		*		
South fork			+						+	+		+		
Rocky fork			+						+	+		+		
Sugarcamp run			*						*	*		*		
Spruce run			+						+	+		+		

Table 9-1. Use designations for water bodies in the Scioto river drainage basin.

Water Body Segment	Use Designations												Comments	
	S R W	Aquatic Life Habitat						Water Supply			Recreation			
		W H	E W H	M W H	S S H	C W H	L R W	P W S	A W S	I W S	B W	P C R		S C R
Little Spruce run		*						*	*		*			
Big run	+							*	*		*			
Canada run		*						*	*		*			
Beech fork			+					+	+		+			
Liston run		*						*	*		*			
Turkey creek			+					+	+		+			
Dry fork			+					+	+		+			
Unnamed tributary (Turkey creek RM 5.27)	+							+	+		+			
Shawnee creek	+							*	*		*			
Turkey run	+							+	+		+			
Deep run	+							*	*		*			
Laurel run		*						*	*		*			
Rogers run	+							+	+		+			
Cassel run			+					*	*		*			
Walker run			*					*	*		*			
Winterstein run			+					+	+		+			
Mill creek			+					+	+		+			
Randall run		*						*	*		*			

Table 9-1. Use designations for water bodies in the Scioto river drainage basin.

Water Body Segment	Use Designations												Comments	
	S R W	Aquatic Life Habitat						Water Supply			Recreation			
		W H	E W H	M W H	S S H	C W H	L R W	P W S	A W S	I W S	B W	P C R		S C R
Middle branch	+							+	+			+		
Unnamed tributary (Middle branch RM 0.81)	+							+	+			+		
Middle fork		*						*	*			*		
Hickman run	+							*	*			*		
Unnamed tributary (Hickman run RM 1.14)			+					+	+			+		
Ellis run			+					*	*			*		
Unnamed tributary (Mill creek RM 3.93)			+					+	+			+		
Burr run	+							*	*			*		
Bailey run		*						*	*			*		
Churn creek	+							+	+			+		
Blue creek	+							+	+			+		
Glen run		*						*	*			*		
Minque run		*						*	*			*		
Moon run		*						*	*			*		
Hog run		*						*	*			*		
Hollow fork (formerly Haw fork)		*						*	*			*		
Johnson run		+						*	*			*		
Bolander run		*						*	*			*		

Table 9-1. Use designations for water bodies in the Scioto river drainage basin.

Water Body Segment	Use Designations												Comments	
	S R W	Aquatic Life Habitat						Water Supply			Recreation			
		W H	E W H	M W H	S S H	C W H	L R W	P W S	A W S	I W S	B W	P C R		S C R
Slate fork		*						*	*		*			
Buttermilk fork		*						*	*		*			
Coffer run		*						*	*		*			
Carter run		*						*	*		*			
Unnamed tributary (Churn creek RM 5.80)	+							+	+		+			
Bloody run		*						*	*		*			
Chambers run		*						*	*		*			
Whites run		*						*	*		*			
Early run		*						*	*		*			
Laurel run		*						*	*		*			
Dry run	+							+	+		+			
Sugarcamp run		*						*	*		*			
Staley run		*						*	*		*			
Salome run		*						*	*		*			
U P run		*						*	*		*			
Thompson run	+							*	*		*			
Mullen run		*						*	*		*			
Abe run		*						*	*		*			

Table 9-1. Use designations for water bodies in the Scioto river drainage basin.

Water Body Segment	Use Designations												Comments	
	S R W	Aquatic Life Habitat						Water Supply			Recreation			
		W H	E W H	M W H	S S H	C W H	L R W	P W S	A W S	I W S	B W	P C R		S C R
Jessie run		*						*	*		*			
Dunlap creek		+						+	+		+			
Rarden creek		+						+	+		+			
Dry fork		+						+	+		+			
Bull run		+						+	+		+			
Straight fork		+						+	+		+			
Jaybird branch						+		+	+		+		Natural conditions - low pH.	
Unnamed tributary (Jaybird branch RM 2.11)						+		+	+		+		Natural conditions - low pH.	
Cedar fork		+						+	+		+			
Plum run		+						+	+		+			
Unnamed tributary (Scioto Brush creek RM 33.90)		+						+	+		+			
Unnamed tributary (Unnamed tributary RM 0.18)		+						+	+		+			
Bettys creek		+						+	+		+			
Sturgeon run		*						*	*		*			
Candy run		+						+	+		+			
Miller run		+						+	+		+			
Cockrell run		+						+	+		+			
Devers run		*						*	*		*			

Table 9-1. Use designations for water bodies in the Scioto river drainage basin.

Water Body Segment	Use Designations												Comments	
	S R W	Aquatic Life Habitat						Water Supply			Recreation			
		W H	E W H	M W H	S S H	C W H	L R W	P W S	A W S	I W S	B W	P C R		S C R
Big run		+						+	+			+		
Slate run		*						*	*			*		
Bear creek		+						+	+			+		
Camp creek		+						+	+			+		
Spunk run		*						*	*			*		
Left fork						+		+	+			+		
Rock run		*						*	*			*		
Drake run		*						*	*			*		
Big run (Scioto river RM 22.15)		+						+	+			+		
Salt creek		*						*	*			*		
Ganderhook creek		*						*	*			*		
Piketon DOE tributary							o	o	o				o	
West ditch		+						o	o				+	
Sunfish creek	*	+						+	+			+		
Loys run	*	*						*	*			*		
Chenoweth fork	*	+						+	+			+		
Bull run	*	*						*	*			*		
Carter run	*	+						+	+			+		

Table 9-1. Use designations for water bodies in the Scioto river drainage basin.

Water Body Segment	Use Designations												Comments	
	S R W	Aquatic Life Habitat						Water Supply			Recreation			
		W H	E W H	M W H	S S H	C W H	L R W	P W S	A W S	I W S	B W	P C R		S C R
Camp run	*	*							*	*		*		
Georges run	*	*							*	*		*		
Long run	*	*							*	*		*		
Leeth creek	*					+			+	+		+		
Morgan fork		+							+	+		+		
Left fork	*					+			+	+		+		
Right fork	*	+							+	+		+		
Middle fork (Right fork RM 1.35)		+							+	+		+		
Lick run	*	*							*	*		*		
Sparcy run	*	*							*	*		*		
Grassy fork	*					+			+	+		+		
Kincaid creek	*					+			+	+		+		
Dry Bone creek	*	*							*	*		*		
Beaver creek - headwaters to Piketon	*	+							+	+		+		
- all other segments		+							+	+		+		
Little Beaver creek	*	+							+	+		+		
Millers run	*	*							*	*		*		
Fourmile creek	*	*							*	*		*		

Table 9-1. Use designations for water bodies in the Scioto river drainage basin.

Water Body Segment	Use Designations												Comments	
	S R W	Aquatic Life Habitat						Water Supply			Recreation			
		W H	E W H	M W H	S S H	C W H	L R W	P W S	A W S	I W S	B W	P C R		S C R
Fivemile creek	*	*							*	*		*		
Pecks creek	*	+							+	+		+		
Millstone run	*	*							*	*		*		
Dutch run	*	*							*	*		*		
Swift creek	*	*							*	*		*		
No Name creek		+							+	+		+		
Long fork		*							*	*		*		
Sugar run		*							*	*		*		
Boswell run		*							*	*		*		
Peepee creek		+							+	+		+		
Crooked creek		+							+	+		+		
Left fork		+							+	+		+		
Honey creek		*							*	*		*		
Wintergreen run		*							*	*		*		
Long branch		*							*	*		*		
Wolf run		*							*	*		*		
Haw fork		+							+	+		+		
Turkey run		*							*	*		*		

Table 9-1. Use designations for water bodies in the Scioto river drainage basin.

Water Body Segment	Use Designations												Comments	
	S R W	Aquatic Life Habitat						Water Supply			Recreation			
		W H	E W H	M W H	S S H	C W H	L R W	P W S	A W S	I W S	B W	P C R		S C R
Brushy fork		*						*	*		*			
Marcus run		*						*	*		*			
Meadow run		+						+	+		+			
Straight creek		*						*	*		*			
Wilson run		*						*	*		*			
Moore run		+						+	+		+			
Carrs run		+						+	+		+			
Jackson run		*						*	*		*			
Bee lick		*						*	*		*			
Mutton run		*						*	*		*			
Hickson run						+		+	+		+			
Sandy Bottom creek		*						*	*		*			
Salt creek			+					+	+		+			
Whisky run	*	*						*	*		*			
Salt Lick creek (little Salt creek)		+						+	+		+			
Middle fork Salt creek		+						+	+		+			
Pigeon creek		+						+	+		+			
Long branch		+						+	+		+			

Table 9-1. Use designations for water bodies in the Scioto river drainage basin.

Water Body Segment	Use Designations												Comments	
	S R W	Aquatic Life Habitat						Water Supply			Recreation			
		W H	E W H	M W H	S S H	C W H	L R W	P W S	A W S	I W S	B W	P C R		S C R
Skunk hollow creek (Pigeon creek RM 6.66)		+						+	+			+		
Unnamed tributary (Pigeon creek RM 7.52)		+						+	+			+		
Glade run	*	*						*	*			*		
Stevens branch	*	*						*	*			*		
Unnamed tributary (middle fork Salt creek RM 13.00)		+						+	+			+		
Kelly branch			+			+		+	+			+		
Riley run		+						+	+			+		
Unnamed tributary (middle fork Salt creek RM 20.62)		+						+	+			+		
Pigeon creek (Salt Lick creek RM 6.35)		+						+	+			+		
Poplar run		+						+	+			+		
Big run		+						+	+			+		
Dry run	*	*						*	*			*		
Sour run		+						+	+			+		
Rock run	*	*						*	*			*		
Buckeye creek		+						+	+			+		
Buckeye creek tributaries	*		*					*	*			*		
Unnamed tributary (Salt Lick creek RM 22.55)		+						+	+			+		
Jisco lake tributaries	*		*					*	*			*		

Table 9-1. Use designations for water bodies in the Scioto river drainage basin.

Water Body Segment	Use Designations												Comments	
	S R W	Aquatic Life Habitat						Water Supply			Recreation			
		W H	E W H	M W H	S S H	C W H	L R W	P W S	A W S	I W S	B W	P C R		S C R
Horse creek		+							+	+		+		
Sugar run		+							+	+		+		
Fourmile creek		+							+	+		+		
Goose creek	*	*							*	*		*		
Mulgee run (Salt creek RM 5.55)		+							+	+		+		
Poe run			+						*	*		+		
Bluelick run	*	*							*	*		*		
Cox run	*	*							*	*		*		
Pike run			+						+	+		+		
East fork		+							+	+		+		
Pretty run - headwaters to Dry branch (RM 1.88)			+			+			+	+		+		
- Dry branch to the mouth			+						+	+		+		
Dry branch	*	*							*	*		*		
North branch						+			+	+		+		
Queer creek			+			+			+	+		+		
Goose creek			+			+			+	+		+		
East fork			+			+			+	+		+		
Unnamed tributary (East fork RM 4.24)						+			+	+		+		

Table 9-1. Use designations for water bodies in the Scioto river drainage basin.

Water Body Segment	Use Designations												Comments	
	S R W	Aquatic Life Habitat						Water Supply			Recreation			
		W H	E W H	M W H	S S H	C W H	L R W	P W S	A W S	I W S	B W	P C R		S C R
Blue creek	*	*							*	*		*		
Pine creek						+			+	+		+		
Little Pine creek - headwaters to Wagner rd. (RM 1.4)						+			+	+		+		
- Wagner rd. to the mouth		+							+	+		+		
Spruce run	*	*							*	*		*		
Rocky branch	*	*							*	*		*		
Little Blackjack branch	*	*							*	*		*		
Blackjack branch	*	*							*	*		*		
Sams creek			+						+	+		+		
California branch	*	*							*	*		*		
Brimstone creek		+							+	+		+		
Laurel run - headwaters to Toad hollow (RM 9.0)			+			+			+	+		+		
- Toad hollow to the mouth			+						+	+		+		
Moccasin creek						+			+	+		+		
Dry run	*	*							*	*		*		
Middle fork			+						+	+		+		
Long run	*	*							*	*		*		
Cola creek						+			+	+		+		

Table 9-1. Use designations for water bodies in the Scioto river drainage basin.

Water Body Segment	Use Designations												Comments	
	S R W	Aquatic Life Habitat						Water Supply			Recreation			
		W H	E W H	M W H	S S H	C W H	L R W	P W S	A W S	I W S	B W	P C R		S C R
Little Cola creek	*	*							*	*		*		
Beech fork (Salt creek RM 34.1)			+						+	+		+		
Bull creek (Beech fork RM 1.54)		+							+	+		+		
Pikehole creek (Beech fork RM 1.9)	*	*							*	*		*		
Plum run			+						+	+		+		
Walnut creek – headwaters to Piny run (RM 13.56)		+							+	+		+		
- Piny run (RM 13.56) to the mouth			+						+	+		+		
Sugar run		*							*	*		*		
Little Walnut creek			+						+	+		+		
Spud run		*							*	*		*		
Piny run						+			+	+		+		
Stony creek		+							+	+		+		
Dry run (Scioto river RM 59.8)		+							+	+		+		
Indian creek		+							+	+		+		
North branch		+							+	+		+		
Paint creek - at RM 71.4		+						o	+	+		+	PWS intake - Washington Court House	
- U.S. rte. 35 (RM 67.4) to st. rte. 772 (RM 3.8)			+						+	+		+		
- all other segments		+							+	+		+		

Table 9-1. Use designations for water bodies in the Scioto river drainage basin.

Water Body Segment	Use Designations												Comments	
	S R W	Aquatic Life Habitat						Water Supply			Recreation			
		W H	E W H	M W H	S S H	C W H	L R W	P W S	A W S	I W S	B W	P C R		S C R
North fork			+						+	+		+		
Biers run		+							+	+		+		
Mad run		*							*	*		*		
Anderson run		*							*	*		*		
Sulphur lick		*							*	*		*		
Dry run		*							*	*		*		
Little creek		+							+	+		+		
Dewey creek		*							*	*		*		
Oldtown run		*							*	*		*		
McCortney run		*							*	*		*		
Herrod creek		*							*	*		*		
Whetstone run		*							*	*		*		
Compton creek - headwaters to Dews run (RM 11.28)		+							+	+		+		
- Dews run to the mouth			+						+	+		+		
Crooked creek		+							+	+		+		
Mud run		+							+	+		+		
Thompson creek		+							+	+		+		
Ralston run		*							*	*		*		

Table 9-1. Use designations for water bodies in the Scioto river drainage basin.

Water Body Segment	Use Designations												Comments	
	S R W	Aquatic Life Habitat						Water Supply			Recreation			
		W H	E W H	M W H	S S H	C W H	L R W	P W S	A W S	I W S	B W	P C R		S C R
Cattail run							+			+	+		+	
Owl creek							+			+	+		+	
Plug run							+			+	+		+	
Black run - headwaters to Spruce Hill rd. (RM 1.0)							+			+	+		+	
- Spruce Hill rd. to the mouth		+								+	+		+	
Mine run		*								*	*		*	
Lower Twin creek			+							+	+		+	
Upper Twin creek			+							+	+		+	
Proud run		*								*	*		*	
Sulphur lick		*								*	*		*	
Minnehan run		*								*	*		*	
Buckskin creek - headwaters to Cliff Run rd. (RM 5.75)		+								+	+		+	
- Cliff Run rd. to the mouth			+							+	+		+	
Slate run		*								*	*		*	
North fork		*								*	*		*	
Cove run		*								*	*		*	
Massie run		*								*	*		*	
Rocky fork			+							+	+		+	

Table 9-1. Use designations for water bodies in the Scioto river drainage basin.

Water Body Segment	Use Designations												Comments	
	S R W	Aquatic Life Habitat						Water Supply			Recreation			
		W H	E W H	M W H	S S H	C W H	L R W	P W S	A W S	I W S	B W	P C R		S C R
Factory branch	*	*						*	*			*		
Pickett run						+		+	+			+		
Heads branch	*	*						*	*			*		
Puncheon run	*	*						*	*			*		
Franklin branch	*	*						*	*			*		
Plum run	*	*						*	*			*		
Blinco branch	*	*						*	*			*		
Churn creek	*	*						*	*			*		
Smith branch	*	*						*	*			*		
Clear creek - at RM 7.4			+				o	+	+			+	PWS intake - Hillsboro	
- all other segments			+					+	+			+		
Moberly branch		+						+	+			+		
Hussey run			*					*	*			*		
Little Rock creek		+						+	+			+		
Fenner tributary (Clear creek RM 8.57)		+						+	+			+		
South fork			*					*	*			*		
Unnamed tributary (Rocky fork RM 17.55)		+						+	+			+		
Cliff creek		*						*	*			*		

Table 9-1. Use designations for water bodies in the Scioto river drainage basin.

Water Body Segment	Use Designations												Comments	
	S R W	Aquatic Life Habitat						Water Supply			Recreation			
		W H	E W H	M W H	S S H	C W H	L R W	P W S	A W S	I W S	B W	P C R		S C R
Plum run		*						*	*			*		
Rattlesnake creek		+						+	+			+		
Cedar run		*						*	*			*		
Fell creek		*						*	*			*		
Big branch		+						+	+			+		
Hardin creek		+						+	+			+		
Bull creek		*						*	*			*		
Bridgewater creek		*						*	*			*		
Walnut creek		+						+	+			+		
Lees creek		+						+	+			+		
Middle fork		+						+	+			+		
South fork		+						+	+			+		
West branch - headwaters to Pearson rd. (RM 9.8)				+				+	+			+	ECBP ecoregion - channel modification	
- Pearson rd. to the mouth		+						+	+			+		
Grassy branch		*						*	*			*		
Wilson creek				+				+	+			+	ECBP ecoregion - channel modification	
Unnamed tributary (Rattlesnake creek RM 40.21)				+				+	+			+	ECBP ecoregion - channel modification	
Opossum run		*						*	*			*		

Table 9-1. Use designations for water bodies in the Scioto river drainage basin.

Water Body Segment	Use Designations												Comments	
	S R W	Aquatic Life Habitat						Water Supply			Recreation			
		W H	E W H	M W H	S S H	C W H	L R W	P W S	A W S	I W S	B W	P C R		S C R
Farmers run	*							*	*		*			
Duncan run	*							*	*		*			
Sugar run	*							*	*		*			
Holliday run	*							*	*		*			
Stone run	*							*	*		*			
Buck run	*							*	*		*			
Indian creek	*							*	*		*			
Wabash creek	+							+	+		+			
Sugar creek - headwaters to Carrs Mill-Jamestown rd. (RM 32.2)				+				+	+		+		ECBP ecoregion - channel modification	
- Carrs Mill-Jamestown rd. to the mouth	+							+	+		+			
East fork	+							+	+		+			
Big run	*							*	*		*			
Brock ditch	*							*	*		*			
Vallery ditch (East fork RM 15.91)				+				+	+		+		ECBP ecoregion - channel modification	
County ditch	*							*	*		*			
Lick run	+							+	+		+			
Dry run (Scioto river RM 74.6)						+		+	+		+			
Dry run (Scioto river RM 79.8)	*							*	*		*			

Table 9-1. Use designations for water bodies in the Scioto river drainage basin.

Water Body Segment	Use Designations												Comments	
	S R W	Aquatic Life Habitat						Water Supply			Recreation			
		W H	E W H	M W H	S S H	C W H	L R W	P W S	A W S	I W S	B W	P C R		S C R
Kinnikinnick creek		+						+	+			+		
South fork		+						+	+			+		
Dresbach creek		+						+	+			+		
Deer creek - Sugar run (RM 41.22) to the mouth			+					+	+			+		
- all other segments		+						+	+			+		
Waugh run		+						+	+			+		
Hay run		+						+	+			+		
Stall run		+						+	+			+		
Brush creek (Hay run RM 4.84)		+						+	+			+		
Dry run		+						+	+			+		
Buskirk creek - headwaters to RM 2.7		+						+	+			+		
- RM 2.7 to the mouth			+					+	+			+		
Clark run		+						+	+			+		
Georges run		+						+	+			+		
Long branch		*						*	*			*		
Duff's fork		+						+	+			+		
Opossum run		+						+	+			+		
Sugar run			+					+	+			+		

Table 9-1. Use designations for water bodies in the Scioto river drainage basin.

Water Body Segment	Use Designations												Comments	
	S R W	Aquatic Life Habitat						Water Supply			Recreation			
		W H	E W H	M W H	S S H	C W H	L R W	P W S	A W S	I W S	B W	P C R		S C R
Mud run		+							+	+		+		
Bradford creek - headwaters to RM 6.1		+							+	+		+		
- RM 6.1 to the mouth			+						+	+		+		
South fork		+							+	+		+		
Bradford branch (Turtle run)		+							+	+		+		
Turkey run		*							*	*		*		
Oak run		+							+	+		+		
Walnut run		+							+	+		+		
Glade run		+							+	+		+		
Georges fork		+							+	+		+		
North fork		+							+	+		+		
Blackwater creek		+							+	+		+		
Scippo creek - old Tarlton pike (RM 14.8) to the mouth			+						+	+		+		
- all other segments		+							+	+		+		
Congo creek (Scippo creek RM 1.64)		+							+	+		+		
Unnamed tributary (Scippo creek RM 16.31)		+							*	*			+	
Unnamed tributary (Scippo creek RM 18.87)							+		*	*			+	
Yellowbud creek - upstream Ebenhack rd. (RM 3.0) to the mouth			+						+	+		+	Small drainageway maintenance	

Table 9-1. Use designations for water bodies in the Scioto river drainage basin.

Water Body Segment	Use Designations												Comments	
	S R W	Aquatic Life Habitat						Water Supply			Recreation			
		W H	E W H	M W H	S S H	C W H	L R W	P W S	A W S	I W S	B W	P C R		S C R
- all other segments		+							+	+		+		
Wolf run		*							*	*		*		
Lick run		+							+	+		+		
RCA tributary (Scioto river RM 96.5)						+			+	+			+	
Hargus creek		+							+	+		+		
Hominy creek		+							+	+		+		
Big Darby creek - twp. rd. 157 (RM 79.23) to the mouth			+						+	+		+		
- headwaters to twp. rd. 157			+			+			+	+		+		
Georges run (creek)		+							+	+			+	
Greenbrier creek		+							+	+		*		
Unnamed tributary (Big Darby creek RM 18.41)		+							+	+			+	
Unnamed tributary (Big Darby creek RM 20.2)		+							+	+		+		
Unnamed tributary (Big Darby creek RM 23.61)						+			+	+		+		
Unnamed tributary (Big Darby creek RM 23.77)		+							+	+			+	
Springwater run						+			+	+		+		
Hellbranch run - Kropp rd. (RM 5.04) to the mouth			+						+	+		+		
- all other segments		+							+	+		+		
Clover Groff ditch - headwaters to Feder rd.				+					+	+		+		

ECBP ecoregion - channel modification

Table 9-1. Use designations for water bodies in the Scioto river drainage basin.

Water Body Segment	Use Designations												Comments	
	S R W	Aquatic Life Habitat						Water Supply			Recreation			
		W H	E W H	M W H	S S H	C W H	L R W	P W S	A W S	I W S	B W	P C R		S C R
- Feder rd. (RM 2.5) to the mouth		+							+	+		+		
Hamilton ditch - headwaters to Feder rd. (RM 2.1)				+					+	+		+	ECBP ecoregion - channel modification	
- Feder rd. to the mouth		+							+	+		+		
McCoy run (Hamilton ditch RM 0.56)		+							+	+		+		
Gay run		+							+	+		+		
Smith ditch - unnamed tributary adjacent Lilly Chapel rd. at RM 3.7 to the mouth			+						+	+		+		
Unnamed tributary (Smith ditch RM 0.06)			+						+	+		+		
Little Darby creek - Lake run (RM 36.9) to the mouth			+						+	+		+		
- headwaters to Lake run			+			+			+	+		+		
Spring fork			+						+	+		+		
Bales ditch (Spring fork RM 3.64) - downstream st. rte. 29 (RM 1.3) to the mouth		+							+	+			+	
Wamp ditch - adjacent Finley-Guy rd. (RM 0.4) to the mouth		+							+	+			+	
Barron creek - Rosedale-Plain city rd. (RM 2.1) to the mouth		+							+	+			+	
- headwaters to Rosedale-Plain city rd.				*					+	+			+	
Treacle creek			+						+	+		+		
Proctor run			+						+	+		+		
Howard run			+						+	+		+		

Table 9-1. Use designations for water bodies in the Scioto river drainage basin.

Water Body Segment	Use Designations												Comments	
	S R W	Aquatic Life Habitat						Water Supply			Recreation			
		W H	E W H	M W H	S S H	C W H	L R W	P W S	A W S	I W S	B W	P C R		S C R
Lake run			+						+	+			+	
Jumping run - adjacent Bullard-Rutan rd. (RM 1.5) to the mouth				+						+	+			+
- headwaters to Bullard-Rutan rd.				*					*	*			*	
Clover run						+				+	+			+
Fitzgerald ditch (Threemile run) - RM 1.65 (terminus of county maintenance) to the mouth		+								+	+			+
- headwaters to RM 1.65			*						*	*			*	
Yutzy ditch - adjacent Price-Hilliards rd. (RM 1.0) to the mouth		+								+	+			+
Ballenger-Jones ditch - U.S. rte. 42 (RM 2.4) to the mouth		+								+	+			+
Worthington ditch - upstream Plain city-Georgesville rd. (RM 1.0) to the mouth		+								+	+			+
Sugar run - headwaters to Taylor rd. (RM 6.7)					+					+	+			+
- all other segments		+								+	+			+
Sweeney run - Lafayette-Plain city rd. (RM 1.8) to the mouth		+								+	+			+
Robinson run		+								+	+			+
Sugar run		+								+	+			*
Buck run		+								+	+			+
Prairie run		+								+	+			*

ECBP ecoregion - channel modification

Table 9-1. Use designations for water bodies in the Scioto river drainage basin.

Water Body Segment	Use Designations												Comments	
	S R W	Aquatic Life Habitat						Water Supply			Recreation			
		W H	E W H	M W H	S S H	C W H	L R W	P W S	A W S	I W S	B W	P C R		S C R
Hay run - upstream Mechanicsburg-Plain city rd. (RM 0.5) to the mouth			+						+	+		+		
- headwaters to Mechanicsburg-Plain city rd.		*							*	*		*		
Unnamed tributary (Big Darby creek RM 69.4)		+							+	+			+	
Pleasant run			+						+	+		+		
Spain creek - headwaters to Erie-Lackawanna railroad crossing (RM 5.0)		+				+			+	+		+		
- all other segments			+			+			+	+		+		
Unnamed tributary (Big Darby creek RM 74.91)			+						+	+			+	
Little Darby creek (Big Darby creek RM 78.34)			+			+			+	+		+		
Flat branch				+					+	+		+		
Dry run		+							+	+		+		
Griffy run		+							+	+		+		
Walnut creek (little Walnut creek)		+							+	+		+		
Little Walnut creek - headwaters to Ringgold northern rd. (RM 4.04)						+			+	+		+		
- Ringgold northern rd. to Turkey run (RM 3.0)			+						+	+		+		
- Turkey run to the mouth		+							+	+		+		
Bull run		+							+	+		+		
Turkey run - headwaters to Creek rd. (RM 6.53)						+			+	+		+		

ECBP ecoregion - channel modification

Table 9-1. Use designations for water bodies in the Scioto river drainage basin.

Water Body Segment	Use Designations												Comments	
	S R W	Aquatic Life Habitat						Water Supply			Recreation			
		W H	E W H	M W H	S S H	C W H	L R W	P W S	A W S	I W S	B W	P C R		S C R
- Creek rd. to Circleville Winchester rd. (RM 0.93)		+							+	+		+		
- Winchester rd. to the mouth			+						+	+		+		
Lick run		*							*	*		*		
Cherry run		+							+	+		+		
Manns run (Walnut creek RM 9.96)		+							+	+			+	
Mud run		+							+	+		+		
Slate run		+							+	+		+		
Rickenbacker tributary (Walnut creek RM 15.54)				+					+	+			+	ECBP ecoregion - channel modification
Rickenbacker tributary (Walnut creek RM 15.64)		+							+	+			+	
Big run - headwaters to Elder rd. (RM 3.9)						+			+	+		+		
- Elder rd. to the mouth		+							+	+		+		
Georges creek		+							+	+		+		
East fork (Georges creek RM 2.0)		+							+	+		+		
Tussing ditch - headwaters to Groveport rd. (RM 0.4)				+					+	+		+		ECBP ecoregion - channel modification
- all other segments		+							+	+		+		
Unnamed tributary (Walnut creek RM 23.70)		+							+	+		+		
Sycamore creek		+							+	+		+		
Unnamed tributary (Walnut creek RM 29.83)						+			+	+		+		

Table 9-1. Use designations for water bodies in the Scioto river drainage basin.

Water Body Segment	Use Designations												Comments	
	S R W	Aquatic Life Habitat						Water Supply			Recreation			
		W H	E W H	M W H	S S H	C W H	L R W	P W S	A W S	I W S	B W	P C R		S C R
Gillette run (Walnut creek RM 32.10)		+							+	+			+	
Poplar creek			+						+	+		+		
Pawpaw creek		+							+	+		+		
Zellerbach tributary (West branch Pawpaw creek)		+							+	+			+	
Unnamed tributary (Pawpaw creek RM 1.77)		+							+	+		+		
Pleasantville-Thurston WWTP tributary		+							+	+			+	
Van Meter run		+							+	+		+		
Grove run		+							+	+		+		
Peters run		+							+	+		+		
Big Walnut creek - Williams rd. (RM 15.8) to the mouth			+						+	+		+		
- Hoover reservoir			*					+	+	+		+		PWS intake - Lake of the Woods
- at RM 32.64		+						o	+	+		+		PWS intake - Columbus
- at RM 51.4		+						+	+	+		+		PWS intake - Sunbury (formerly)
- headwaters to Hoover reservoir		+							+	+		+		
- all other segments		*							*	*		*		
Alum creek - at Rms 26.74 and 21.20		+						o	+	+		+		PWS intakes - DELCO (RM26.74) and Westerville (RM 21.20)
- all other segments		+							+	+		+		
Bliss run		*							*	*		*		

Table 9-1. Use designations for water bodies in the Scioto river drainage basin.

Water Body Segment	Use Designations												Comments	
	S R W	Aquatic Life Habitat						Water Supply			Recreation			
		W H	E W H	M W H	S S H	C W H	L R W	P W S	A W S	I W S	B W	P C R		S C R
American ditch							o		o	o			o	Small drainageway maintenance
Kilbourne run (Alum creek RM 16.34)		+							+	+			+	
West Spring run (Alum creek RM 17.15)		+							+	+			+	
Spring run (Alum creek RM 17.22)		+							+	+			+	
Unnamed tributary (Alum creek RM 23.47)		+							+	+			+	
Unnamed tributary (Alum creek RM 25.50)		+							+	+			+	
Big run		+							+	+			+	
Johnson run		*							*	*			*	
Longwell run		*							*	*			*	
Slate run		*							*	*			*	
Bald lick		*							*	*			*	
Salt Well run		*							*	*			*	
West branch - at RM 5.57		+						o	+	+			+	PWS intake - Ashley (formerly)
- all other segments		+							+	+			+	
Turkey run		+							+	+			+	
Indigo creek		*							*	*			*	
Bunker run		+							+	+			+	
Blacklick creek		+							+	+			+	

Table 9-1. Use designations for water bodies in the Scioto river drainage basin.

Water Body Segment	Use Designations												Comments	
	S R W	Aquatic Life Habitat						Water Supply			Recreation			
		W H	E W H	M W H	S S H	C W H	L R W	P W S	A W S	I W S	B W	P C R		S C R
Unnamed tributary (Blacklick creek RM 6.5)		+							+	+		+		
Unnamed tributary (Blacklick creek RM 10.4)		+							+	+		+		
Unnamed tributary (Blacklick creek RM 11.3)		+							+	+		+		
Unnamed tributary (Blacklick creek RM 12.9)		+							+	+		+		
French run (Blacklick creek RM 13.66)		+							+	+		+		
North branch (French run RM 0.33)			+						+	+		+		
Dysar run (Blacklick creek RM 14.64)		+							+	+		+		
Unnamed tributary (Dysar run RM 1.67)		+							+	+		+		
Unnamed tributary (Dysar run RM 2.58)		+							+	+		+		
Unzinger ditch (Blacklick creek RM 15.88) - headwaters to RM 0.6							+		+	+			+	
- all other segments		+							+	+		+		
Swisher creek (Blacklick creek RM 20.94)		+							+	+		+		
Mason run - headwaters to Fifth ave. (RM 6.1)							+		+	+		+	Small drainageway maintenance	
- Fifth ave. to I-70 (RM 1.9)				+					+	+		+	ECBP ecoregion - channel modification	
- I-70 to the mouth		+							+	+		+		
Turkey run - headwaters to RM 1.6							+		+	+			+	
- RM 1.6 to the mouth				+					+	+			+	
Unnamed tributary (Big Walnut creek RM 27.29)		+							+	+		+		

Table 9-1. Use designations for water bodies in the Scioto river drainage basin.

Water Body Segment	Use Designations												Comments	
	S R W	Aquatic Life Habitat						Water Supply			Recreation			
		W H	E W H	M W H	S S H	C W H	L R W	P W S	A W S	I W S	B W	P C R		S C R
Rocky fork - headwaters to U.S. rte. 62 (RM 5.1)		+							+	+		+		
- U.S. rte. 62 to the mouth			+						+	+		+		
Rose run (Rocky fork RM 6.4)		+							+	+		+		
Sugar run (Rocky fork RM 6.6)		+							+	+		+		
McKenna creek (Big Walnut creek RM 29.65)		+							+	+		+		
Unnamed tributary (Big Walnut creek RM 32.60)		+							+	+		+		
Duncan run - at RM 0.68		+						o	+	+		+		
- all other segments		+							+	+		+		
Little Walnut creek		+							+	+		+		
Butler run		+							+	+		+		
East branch		+							+	+		+		
West branch		+							+	+		+		
Unnamed tributary (little Walnut creek RM 9.5)		+							+	+		+		
Prairie run		+							+	+		+		
Rattlesnake creek		+							+	+		+		
North fork		+							+	+		+		
East fork		+							+	+		+		
South fork		+							+	+		+		

PWS intake - Lake-of-the-Woods

Table 9-1. Use designations for water bodies in the Scioto river drainage basin.

Water Body Segment	Use Designations												Comments	
	S R W	Aquatic Life Habitat						Water Supply			Recreation			
		W H	E W H	M W H	S S H	C W H	L R W	P W S	A W S	I W S	B W	P C R		S C R
Perfect creek		+							+	+		+		
Dry run		+							+	+		*		
Culver creek		+							+	+		+		
Unnamed tributary (Culver creek RM 3.32)		+							+	+		+		
Sugar creek		+							+	+		+		
Long run		+							+	+		+		
Reynolds run		+							+	+		+		
Mill creek		+							+	+		+		
Light creek		+							+	+		*		
Castro run		+							+	+		+		
Hayes ditch		+							+	+		*		
Plum run		+							+	+		+		
Grant run		+							+	+		+		
Republican run (Scioto river RM 122.9)		+							+	+			+	
South branch							+		+	+			+	Small drainageway maintenance
Scioto Big run		+							+	+		+		
Marsh run		*							*	*		*		
Kian run				+					+	+		+		ECBP ecoregion – channel modification

Table 9-1. Use designations for water bodies in the Scioto river drainage basin.

Water Body Segment	Use Designations												Comments	
	S R W	Aquatic Life Habitat						Water Supply			Recreation			
		W H	E W H	M W H	S S H	C W H	L R W	P W S	A W S	I W S	B W	P C R		S C R
Williams ditch (tributary to quarry along Scioto river at RM 126.7)							+		+	+			+	Small drainageway maintenance
Renick run		*							*	*			*	
Olentangy river - at RMs 31.23 and 31.02		+						o	+	+			+	PWS intakes - Delaware
- Old Winter rd. (RM 20.4) to I-270 (RM 11.6)			+						+	+			+	
- at RM 18.19			+					o	+	+			+	PWS intake - DELCO
- Adena brook (RM 5.9) to the Dodridge st. dam (RM 4.0)				+					+	+			+	ECBP ecoregion - impounded
- adjacent Tuttle park (RM 3.4) to the Fifth ave. dam (RM 1.9)				+					+	+			+	ECBP ecoregion - impounded
- Conrail railroad crossing (RM 0.5) to the mouth				+					+	+			+	ECBP ecoregion - impounded
- at RM 0.2				+				o	+	+			+	ECBP ecoregion - impounded; PWS intake - Columbus
- all other segments		+							+	+			+	
Glen Echo ravine		+											+	
Turkey run (Olentangy river RM 5.82)		+							+	+				+
Big run (Adena brook)		+							+	+			*	
Bill Moose creek (Olentangy river RM 7.82)		+												+
Turkey run		*							*	*			*	
Kempton run (Olentangy river RM 8.59)		+								+				+

Table 9-1. Use designations for water bodies in the Scioto river drainage basin.

Water Body Segment	Use Designations												Comments	
	S R W	Aquatic Life Habitat						Water Supply			Recreation			
		W H	E W H	M W H	S S H	C W H	L R W	P W S	A W S	I W S	B W	P C R		S C R
Rush run		+							+	+			+	
Linworth run (Olentangy river RM 9.9)		+								+			+	
Bartholomew run		+							+	+			+	
Deep run		+							+	+		+		
Unnamed tributary (Olentangy river RM 18.19)		+							+	+			+	
Unnamed tributary (Olentangy river RM 20.71)		+							+	+		+		
Weiser run		*							*	*		*		
Kingsbury run		*							*	*		*		
Mill run		+							+	+		+		
Delaware run		+							+	+		+		
Sugar run		+							+	+		+		
Clear run		*							*	*		*		
Horseshoe run		+							+	+			+	
Norris run		+							+	+		+		
Indian run		+							+	+		+		
Whetstone creek - headwaters to st. rte. 229 (RM 2.6)			+						+	+		+		
- all other segments		+							+	+		+		
Claypole run		+							+	+		+		

Table 9-1. Use designations for water bodies in the Scioto river drainage basin.

Water Body Segment	Use Designations												Comments	
	S R W	Aquatic Life Habitat						Water Supply			Recreation			
		W H	E W H	M W H	S S H	C W H	L R W	P W S	A W S	I W S	B W	P C R		S C R
Mitchell run		+							+	+		+		
Shaw creek		+							+	+		+		
Mud run		*							*	*		*		
Big run		+							+	+		+		
Pugh ditch		*							*	*		*		
Sams creek		+							+	+		+		
Unnamed tributary (Whetstone creek RM 33.71)		+				+			+	+		+		
East branch		+				+			+	+		+		
Brondige run		+							+	+		+		
Norton run		*							*	*		*		
Qa Qua creek (aka Cauquaw run) - headwaters to RM 3.7				+					+	+			+	ECBP ecoregion - channel modification
- all other segments		+							+	+		+		
Mack ditch (Cauquaw run RM 5.3)							+		*	*			+	Small drainageway maintenance
Laucher and Berringer ditch (Mack ditch RM 0.86)							+		*	*			+	Small drainageway maintenance
Grave creek - headwaters to RM 2.4				+					+	+			+	ECBP ecoregion - channel modification
- all other segments		+							+	+			+	
Riffle creek - headwaters to RM 4.0				+					+	+			+	ECBP ecoregion - channel modification
- all other segments		+							+	+			+	

Table 9-1. Use designations for water bodies in the Scioto river drainage basin.

Water Body Segment	Use Designations												Comments		
	S R W	Aquatic Life Habitat						Water Supply			Recreation				
		W H	E W H	M W H	S S H	C W H	L R W	P W S	A W S	I W S	B W	P C R		S C R	
Ulsh ditch				+						+	+			+	ECBP ecoregion - channel modification
Clendenon ditch				+						+	+			+	ECBP ecoregion - channel modification
Ruehrmond ditch		*								*	*		*		
McKibben ditch		*								*	*		*		
Beaver run		*								*	*		*		
Muskrat ditch		*								*	*		*		
Otter creek		+								+	+		+		
Mud river		*								*	*		*		
Flat run		+								+	+		+		
Thorn run		+								+	+		+		
Noblet drain		*								*	*		*		
Mud run		*								*	*		*		
Mud run				+						+	+			+	ECBP ecoregion - channel modification
Bee run		+								+	+		+		
Zimmerman ditch (Olentangy river RM 81.2)				+						+	+			+	ECBP ecoregion - channel modification
Rocky fork (Olentangy river RM 84.84) - at RM 0.6		+							o	+	+		+		PWS intake - Galion
- all other segments		+								+	+		+		
Shoemaker ditch (Olentangy river RM 88.5)								+		+	+			+	Small drainageway maintenance

Table 9-1. Use designations for water bodies in the Scioto river drainage basin.

Water Body Segment	Use Designations												Comments	
	S R W	Aquatic Life Habitat						Water Supply			Recreation			
		W H	E W H	M W H	S S H	C W H	L R W	P W S	A W S	I W S	B W	P C R		S C R
Dry run		+							+	+			+	
Trabue run		+							+	+			+	
Slate run		*							*	*			*	
Hayden run		+							+	+			+	
North Fork Indian run		+							+	+			+	
South Fork Indian run		+							+	+			+	
Deer run		*							*	*			*	
Eversole run		+							+	+			+	
Mill creek - at RM 19.45		+						o	+	+			+	PWS intake - Marysville
- all other segments		+							+	+			+	
Blues creek - headwaters to st. rte. 4 (RM 11.5)				+					+	+			+	ECBP ecoregion - channel modification
- st. rte. 4 to the mouth		+							+	+			+	
Ronolds run		*							*	*			*	
Dry run		*							*	*			*	
Grassy run		*							*	*			*	
Dun run		*							*	*			*	
BMY tributary (Mill creek RM 9.3)							+		+	+			+	Small drainageway maintenance
Phelps run		*							*	*			*	

Table 9-1. Use designations for water bodies in the Scioto river drainage basin.

Water Body Segment	Use Designations												Comments	
	S R W	Aquatic Life Habitat						Water Supply			Recreation			
		W H	E W H	M W H	S S H	C W H	L R W	P W S	A W S	I W S	B W	P C R		S C R
Crosses run		+							+	+		+		
North branch		+							+	+			+	
Town run		+											+	
Otter run		*							*	*		*		
Otter creek		+							+	+		+		
Moors run		*							*	*		*		
Prairie run		*							*	*		*		
Bokes creek - RM 35.51 (0.66 river miles downstream of st. rte.292) to RM 37.30 (1.13 river miles upstream of st. rte. 292)				+					+	+		+		ECBP ecoregion - channel modification
- all other segments		+							+	+		+		
Smith run		+							+	+			+	
Brush run		+							+	+			+	
Powderlick run - headwaters to RM 3.0 (0.35 river miles downstream of st. rte. 739)							+		+	+		+		Small drainageway maintenance
- all other segments		+							+	+		+		
Unnamed tributary (Powderlick run RM 2.0)		+							+	+			+	
North Fork West Mansfield tributary - headwaters to RM 4.51 (0.15 river miles upstream of Conrail railroad tracks)				+					+	+			+	ECBP ecoregion - channel modification
- all other segments		+							+	+			+	

Table 9-1. Use designations for water bodies in the Scioto river drainage basin.

Water Body Segment	Use Designations												Comments	
	S R W	Aquatic Life Habitat						Water Supply			Recreation			
		W H	E W H	M W H	S S H	C W H	L R W	P W S	A W S	I W S	B W	P C R		S C R
West Fork West Mansfield tributary		+							+	+			+	
East Fork West Mansfield tributary		+							+	+			+	
Mayor Painter ditch							+		+	+			+	Small drainageway maintenance
South branch		+							+	+			+	
Fulton creek		+							+	+			+	
Elliot run				+					+	+			+	ECBP ecoregion – channel modification
Richwood tributary (Fulton creek RM 9.4)							+		+	+			+	Small drainageway maintenance
Big run		*							*	*			*	
Utz run		*							*	*			*	
Kebler run		+							+	+			+	
Ottawa creek - headwaters to Mooney rd. (RM 1.6)							+		*	*			+	Small drainageway maintenance
- Mooney rd. to the mouth		+							+	+			+	
Battle run		+							+	+			+	
Patton run		+							+	+			+	
Beaver run		*							*	*			*	
Davids run		*							*	*			*	
Little Scioto river - RM 9.0 (0.2 miles downstream of Hillman Ford rd.) to the mouth				+					+	+			+	ECBP ecoregion - channel modification
- at RM 7.1				+				o	+	+			+	PWS intake - Marion

Table 9-1. Use designations for water bodies in the Scioto river drainage basin.

Water Body Segment	Use Designations												Comments	
	S R W	Aquatic Life Habitat						Water Supply			Recreation			
		W H	E W H	M W H	S S H	C W H	L R W	P W S	A W S	I W S	B W	P C R		S C R
- all other segments		+							+	+		+		
Honey creek		+							+	+			+	
Rider ditch (Honey creek RM 1.75)						+			*	*			+	Small drainageway maintenance
Cusic ditch (little Scioto river RM 2.55)		+							*	*			+	
Rock Swale ditch							+		+	+			+	Small drainageway maintenance
Columbia ditch - Sawyer lake outlet (RM 2.2) to the mouth				+					+	+			+	ECBP ecoregion - channel modification
North Rockswale ditch - RM 4.4 to the mouth				+					+	+			+	ECBP ecoregion - channel modification
- all other segments		+							+	+			+	
Rock fork		+							+	+			+	
Long branch		*							*	*			*	
Zeig ditch		*							*	*			*	
Rush creek		+							+	+			+	
McDonald creek		+							+	+			+	
Dudley run		*							*	*			*	
Big swale						+			*	*			+	Small drainageway maintenance
Rocky fork		*							*	*			*	
Wildcat creek		+							+	+			+	
Ash run		*							*	*			*	

Table 9-1. Use designations for water bodies in the Scioto river drainage basin.

Water Body Segment	Use Designations												Comments	
	S R W	Aquatic Life Habitat						Water Supply			Recreation			
		W H	E W H	M W H	S S H	C W H	L R W	P W S	A W S	I W S	B W	P C R		S C R
South Wildcat creek	*							*	*		*			
Panther creek	+							+	+		+			
Jims creek	*							*	*		*			
Wolf creek	+							+	+		+			
Garwood run	*							*	*		*			
Gander run	*							*	*		*			
Manlove run	*							*	*		*			
Taylor creek	+							+	+		+			
Silver creek	+							+	+		+			
Jordan run	*							*	*		*			
Batchlet run	*							*	*		*			
Payden run	*							*	*		*			
McCoy run	+							+	+		+			
Cooney ditch	*							*	*		*			
Cottonwood ditch - Hardin county rd. 35 (RM 4.5) to the mouth				+				+	+		+		ECBP ecoregion - channel modification	
- all other segments	*							*	*		*			
Twin branches	*							*	*		*			
Dunlap creek				+				+	+		+		ECBP ecoregion – channel modification	

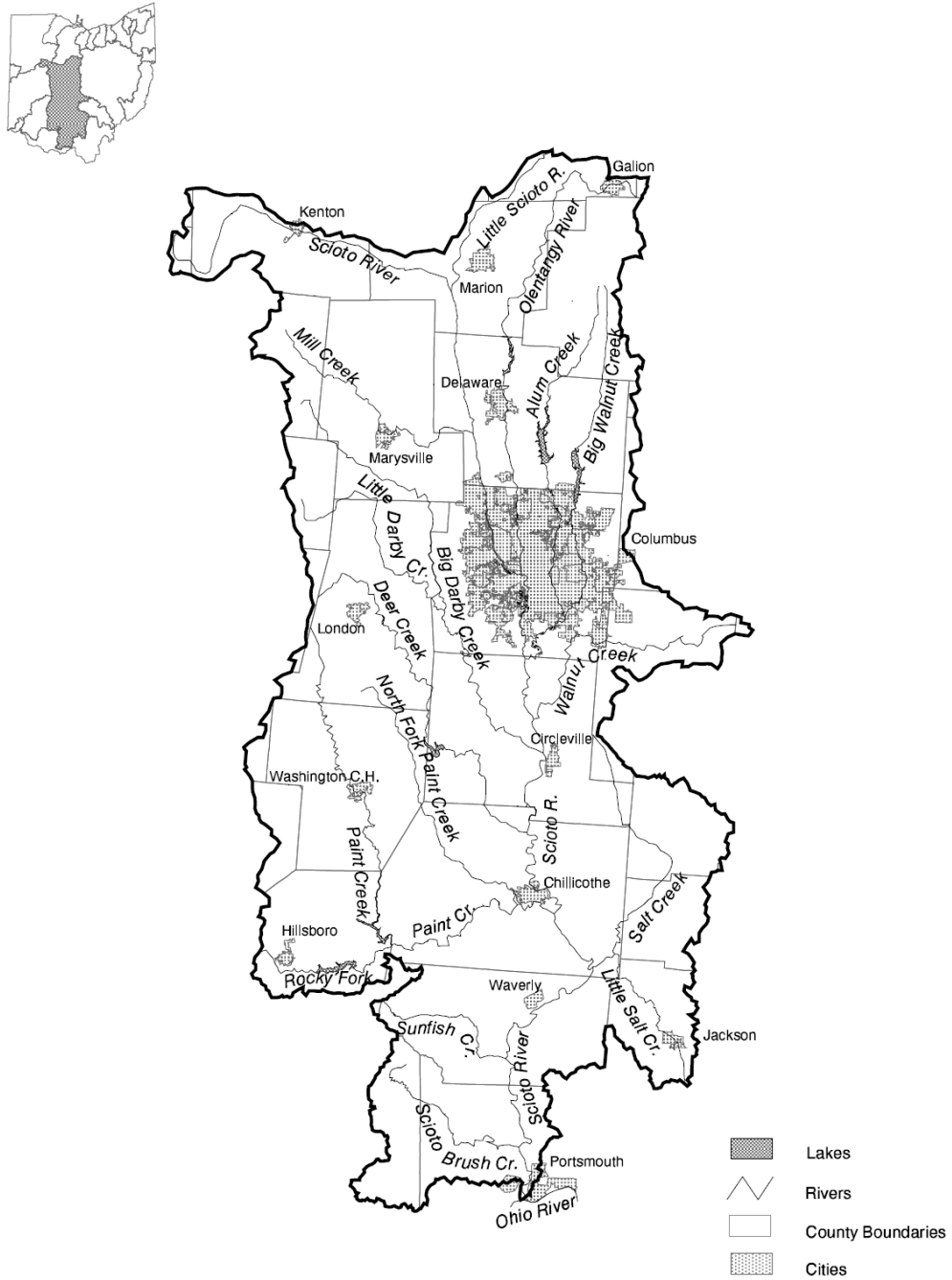
Table 9-1. Use designations for water bodies in the Scioto river drainage basin.

Water Body Segment	Use Designations												Comments				
	S R W	Aquatic Life Habitat						Water Supply			Recreation						
		W H	E H	M H	S H	C H	L W	P W S	A W S	I W S	B W	P C R		S C R			
 Elder creek Poe ditch Wallace fork		*						*	*		*	*					ECBP ecoregion – channel modification

SRW = state resource water; WWH = warmwater habitat; EWH = exceptional warmwater habitat; MWH = modified warmwater habitat; SSH = seasonal salmonid habitat; CWH = coldwater habitat; LRW = limited resource water; PWS = public water supply; AWS = agricultural water supply; IWS = industrial water supply; BW = bathing water; PCR = primary contact recreation; SCR = secondary contact recreation.

Appendix

Figure 1. Scioto river drainage basin.



Effective: 1/2/2017

R.C. 119.032 rule review date: 7/3/2016 and 1/2/2022

Promulgated Under: R.C. 119.03

Statutory Authority: R.C. 6111.041

Rule Amplifies: R.C. 6111.041

Prior Effective Dates: 4/4/1985, 8/19/1985, 4/5/1990, 4/21/1992, 9/30/1993, 4/26/1997, 7/31/1998, 7/31/1999, 3/29/2001, 7/21/2002, 8/1/2007, 4/23/2008, 10/9/2009