

3745-1-21 **Great Miami river drainage basin.**

- (A) The water bodies listed in table 21-1 of this rule are ordered from downstream to upstream. Tributaries of a water body are indented. The aquatic life habitat, water supply and recreation use designations are defined in rule 3745-1-07 of the Administrative Code. The state resource water use designation is defined in rule 3745-1-05 of the Administrative Code. The most stringent criteria associated with any one of the use designations assigned to a water body will apply to that water body.
- (B) Figure 1 of the appendix to this rule is a generalized map of the Great Miami river drainage basin. A generalized map of Ohio outlining the twenty-three major drainage basins and listing associated rule numbers in this chapter is in figure 1 of the appendix to rule 3745-1-08 of the Administrative Code.
- (C) RM, as used in this rule, stands for river mile and refers to the method used by the Ohio environmental protection agency to identify locations along a water body. Mileage is defined as the lineal distance from the downstream terminus (i.e., mouth) and moving in an upstream direction.
- (D) The following symbols are used throughout this rule:
 - * Designated use based on the 1978 water quality standards.
 - + Designated use based on the results of a biological field assessment performed by the Ohio environmental protection agency.
 - o Designated use based on justification other than the results of a biological field assessment performed by the Ohio environmental protection agency.

Table 21-1. Use designations for water bodies in the Great Miami river drainage basin.

Water Body Segment	Use Designations												Comments	
	Aquatic Life Habitat						Water Supply			Recreation				
	S R W	W W H	E W H	M W H	S S H	C W H	L R W	P W S	A W S	I W S	B W	P C R		S C R
 Great Miami river - CSX RR bridge (RM 84.5) to the Troy dam (RM 107.0) - at RMs 86.6, 90.3, 118.5 and 130.2 - RM 108.0 to downstream of Piqua dam (RM 114.0) - Main street (RM 115.15) to the Sidney water works dam (RM 130.2) - Pasco-Montra rd. (RM 134.8) to the Quincy dam (RM 143.4) - all other segments Doublelick run Whitewater river Sand run Dry fork - Ohio-Indiana state line (RM 20.66) to RM 19.6 - RM 19.6 to Atherton rd. (RM 10.2) - Atherton rd. to the mouth - within Miami Whitewater forest boundaries Lee creek Howard creek Kiata creek			+						+	+		+	PWS intakes - Dayton (RMs 86.6 and 90.3), Piqua (RM 118.5), and Sidney (RM 130.2)	
			+					+	+	+		+		
			+					+	+			+		
			+					+	+			+		
			+					+	+			+		
		+						+	+			+		
	*	+						+	+			+		
		*						+	+			+		
		*						+	+			+		
		*						+	+			+		
		*						+	+			+		
		+						+	+			+		

Table 21-1. Use designations for water bodies in the Great Miami river drainage basin.

Water Body Segment	Use Designations												Comments
	Aquatic Life Habitat						Water Supply			Recreation			
	S R W	W W H	E W H	M W H	S S H	C W H	L R W	P W S	A W S	I W S	B W	P C R	
Sater run		*							*	*		*	
Phillips creek		*							*	*		*	
Jamison creek		*							*	*		*	
East fork - headwaters to Little creek (RM 41.7)		+							+	+			+
- Little creek to state line		+							+	+		+	
Elkhorn creek		*							*	*		*	
Mud creek		*							*	*		*	
Horn ditch		*							*	*		*	
Rocky fork		*							*	*		*	
Little creek		*							*	*		*	
Brinley fork		*							*	*		*	
Jocqueway creek		*							*	*		*	
Dry run		*							*	*		*	
Jordan creek		*							*	*		*	
Unnamed tributary (Great Miami river RM 13.23)		+							+	+		+	
Taylor creek		+							+	+		+	
Wessleman creek		+							+	+			+
Briarly creek		+							+	+			+

Table 21-1. Use designations for water bodies in the Great Miami river drainage basin.

Water Body Segment	Use Designations												Comments
	Aquatic Life Habitat						Water Supply			Recreation			
	S R W	W W H	E W H	M W H	S S H	C W H	L R W	P W S	A W S	I W S	B W	P C R	
Steele creek		+							+	+			+
Paddy's run		+							+	+		+	
Bluerock creek		+							+	+		+	
Owl creek		+							+	+		+	
Dunlap run		*							*	*		*	
Dry run		*							*	*		*	
Indian creek	*	+							+	+		+	
Lick run		+							+	+		+	
Salmon run	*	+							+	+		+	
Reserve run		+							+	+		+	
Little Indian creek		+							+	+		+	
Banklick creek		*							*	*		*	
Pleasant run		+							+	+		+	

A site specific copper criterion applies from the point of the "Butler County Queen Acres WWTP" discharge (RM 7.7) to the confluence with the Great Miami river. The copper criteria for this reach are determined using the copper criteria equations in this chapter multiplied by a water effect ratio of 8.684 (dissolved copper) and 9.302 (total recoverable copper), rounded to two significant figures.

Table 21-1. Use designations for water bodies in the Great Miami river drainage basin.

Water Body Segment	Use Designations												Comments
	Aquatic Life Habitat						Water Supply			Recreation			
	S R W	W W H	E W H	M W H	S S H	C W H	L R W	P W S	A W S	I W S	B W	P C R	
Crawford run		*						*	*		*		
Two Mile creek		*						*	*		*		
Shaffer creek		*						*	*		*		
Fourmile creek - headwaters to confluence with Acton lake	*	+						+	+		+		
- Darrtown rd. (RM 13.0) to Sevenmile ave. (RM 0.4)			+					+	+		+		
- all other segments		+						+	+		+		
Sevenmile creek - Paint creek (RM 15.2) to the mouth			+					+	+		+		
- all other segments		+						+	+		+		
Ninemile creek		*						*	*		*		
Big Cave run		+						+	+		+		
Rush run		+						+	+		+		
Paint creek	*	+						+	+		+		
Opossum run		*						*	*		*		
Sugar run		*						*	*		*		
Beasley run		+						+	+		+		
Pottenger run		+						+	+		+		
Rocky run		+						+	+		+		
Periwinkle run		+						+	+		+		

Table 21-1. Use designations for water bodies in the Great Miami river drainage basin.

Water Body Segment	Use Designations												Comments
	Aquatic Life Habitat						Water Supply			Recreation			
	S R W	W W H	E W H	M W H	S S H	C W H	L R W	P W S	A W S	I W S	B W	P C R	
Becketts run		*						*	*			*	
Stony run		+						+	+			+	
Darrs run		+						+	+			+	
Collins creek		+						+	+			+	
Bull run		*						*	*			*	
Harkers run		+						+	+			+	
Elams run (Tolland creek) (Fourmile creek RM 18.80)		+						+	+			+	
Spring run (Fourmile creek RM 20.19)		*						*	*			*	
Morning Sun tributary north (Fourmile creek RM 23.57)		+						+	+			+	
Morning Sun tributary south (Morning Sun tributary north RM 0.25)		+						+	+			+	
Little Fourmile creek	*	+						+	+			+	
Fleisch run		+						+	+			+	
East fork	*	+						+	+			+	
Dixon branch (Harris run)	*	+						+	+			+	
Brentwood tributary		*						*	*			*	
Greencrest tributary		*						*	*			*	
Gregory creek		+						+	+			+	

Table 21-1. Use designations for water bodies in the Great Miami river drainage basin.

Water Body Segment	Use Designations												Comments
	Aquatic Life Habitat						Water Supply			Recreation			
	S R W	W W H	E W H	M W H	S S H	C W H	L R W	P W S	A W S	I W S	B W	P C R	
Coldwater creek		+							+	+		+	
Dicks creek – headwaters to Cincinnati-Dayton road (RM 5.4)		+							+	+		+	
- Cincinnati-Dayton rd. (RM 5.4) to AK steel Middletown outfall 015 (RM 4.15)				+					+	+		+	ECBP ecoregion - channel modification
- AK steel Middletown outfall 015 (RM 4.15) to Yankee road (RM 2.4)				+					+	+		+	ECBP ecoregion – channel modification. Agricultural water supply use – irrigation only. The applicable agricultural water supply criterion for fluoride is 15 mg/l.
- Yankee road (RM 2.4) to the mouth		+							+	+		+	Agricultural water supply use – irrigation only. The applicable agricultural water supply criterion for fluoride is 15 mg/l.
Monroe ditch (Dicks creek RM 2.65) - headwaters to the Middletown corporate boundary (RM 0.8)		+							+	+		+	
North branch - headwaters to Breiel blvd. (RM 1.0)		+							+	+		+	
- Breiel blvd. to mouth				+					+	+		+	ECBP ecoregion - channel modification
Shaker creek		+							+	+		+	
Millers creek		+							+	+		+	
Elk creek			+						+	+		+	
Browns run		+							+	+		+	
Twin creek			+						+	+		+	
Little Twin creek			+						+	+		+	
Reigle ditch		+							+	+		+	

Table 21-1. Use designations for water bodies in the Great Miami river drainage basin.

Water Body Segment	Use Designations												Comments
	Aquatic Life Habitat							Water Supply			Recreation		
	S R W	W W H	E W H	M W H	S S H	C W H	L R W	P W S	A W S	I W S	B W	P C R	
Toms run		+							+	+		+	
Unnamed tributary (Toms run RM 5.34)		+							+	+		+	
Wysong run		*							*	*		*	
Unnamed tributary (Twin Creek RM 18.29)		+							+	+		+	
Aukerman creek		+							+	+		+	
Unnamed tributary (Aukerman creek RM 2.88)		+							+	+		+	
Bantas fork			+						+	+		+	
Goose creek - downstream Winnerline rd. (RM 3.0) to the mouth			+						+	+		+	
- all other segments		+							+	+		+	
Lowry run		*							*	*		*	
Lesley run		+							+	+		+	
Coffman run		*							*	*		*	
Price creek - Brennersville Pymont rd. (RM 2.88) to the mouth			+						+	+		+	
- all other segments		+							+	+		+	
Jims run		*							*	*		*	
Swamp creek - downstream Sonora rd. (RM 4.0) to the mouth			+						+	+		+	
- all other segments		+							+	+		+	

Table 21-1. Use designations for water bodies in the Great Miami river drainage basin.

Water Body Segment	Use Designations												Comments
	Aquatic Life Habitat							Water Supply			Recreation		
	S R W	W W H	E W H	M W H	S S H	C W H	L R W	P W S	A W S	I W S	B W	P C R	
Unnamed tributary (Swamp creek RM 6.45)		+							+	+		+	
Millers fork - headwaters to Otterbein Ithica rd. (RM 9.65)		+							+	+		+	
- Otterbein Ithica rd. to the mouth				+					+	+		+	
Lick run		*							*	*		*	
Dry fork		+							+	+		+	
Maple swamp ditch - unnamed tributary at RM 1.71 to the mouth		+							+	+		+	
Clear creek		+							+	+		+	
Gander run		*							*	*		*	
Goose creek		*							*	*		*	
Dry run		*							*	*		*	
Crains run		*							*	*		*	
Mound overflow creek (Great Miami river RM 65.08)				+					+	+		+	ECBP ecoregion - impounded
Bear creek		+							+	+		+	
Little Bear creek		+							+	+		+	
Garber run		*							*	*		*	
Diehl run		*							*	*		*	
Lick run		*							*	*		*	
Spring run		*							*	*		*	

Table 21-1. Use designations for water bodies in the Great Miami river drainage basin.

Water Body Segment	Use Designations												Comments	
	Aquatic Life Habitat						Water Supply			Recreation				
	S R W	W W H	E W H	M W H	S S H	C W H	L R W	P W S	A W S	I W S	B W	P C R		S C R
Owl creek							+		+	+			+	Small drainageway maintenance
Opossum creek	*	+							+	+		+		
Holes creek		+							+	+		+		
Wolf creek		+							+	+		+		
Dry run		+							+	+		+		
North branch		+							+	+		+		
Razor run		+							+	+		+		
Moss creek (North branch RM 1.77)		+							+	+		+		
Poplar run		*							*	*		*		
Mad river - headwaters to Buck creek (RM 26.15)						+			+	+		+		
- at RMs 5.2 and 5.6		+						+	+	+		+		PWS intakes - Dayton
- Buck creek to the mouth		+							+	+		+		
Hebble run				+						+		+		ECBP ecoregion - channel modification
Mud run		+							+	+		+		
Clear creek		+							+	+		+		
Unnamed tributary (Mud run RM 9.8)		+							+	+		+		
Mud creek		+							+	+		+		
Dry Lick run		+							+	+		+		

Table 21-1. Use designations for water bodies in the Great Miami river drainage basin.

Water Body Segment	Use Designations												Comments
	Aquatic Life Habitat						Water Supply			Recreation			
	S R W	W W H	E W H	M W H	S S H	C W H	L R W	P W S	A W S	I W S	B W	P C R	
Smith ditch		*							*	*		*	
Rubsam ditch (Mad river RM 13.33)						*			*	*		*	
Medway creek (Mad river RM 14.29)						+			*	*		+	
Jackson creek		+							+	+		+	
Donnels creek		+							+	+		+	
East fork		+							+	+		+	
Rock run		+							+	+		+	
Miller creek		+							+	+		+	
Mill creek		+							+	+		+	
Buck creek - park boundaries between C.J. Brown reservoir and the mouth	+	+							+	+		+	
- headwaters to C.J. Brown reservoir						+			+	+		+	
- all other segments		+							+	+		+	
Beaver creek		+							+	+		+	
Sinking creek		+							+	+		+	
East fork						+			+	+		+	
Dugan ditch						+			+	+		+	
Pandy creek	*	+							+	+		+	

Table 21-1. Use designations for water bodies in the Great Miami river drainage basin.

Water Body Segment	Use Designations												Comments
	Aquatic Life Habitat						Water Supply			Recreation			
	S R W	W W H	E W H	M W H	S S H	C W H	L R W	P W S	A W S	I W S	B W	P C R	
Dry run	*	+							+	+		+	
Moore run		+							+	+		+	
Kenton creek		+							+	+		*	
Chapman creek						+			+	+		+	
Panther creek	*					*			*	*		*	
Deer creek	*	+							+	+		+	
Blacksnake creek	*	+							+	+		+	
Storms creek	*					+			+	+		+	
Cedar run						+			+	+		+	
East branch						+			*	*		+	
West branch						+			*	*		+	
Cedar bog	*					*			*	*		*	
Bogles run	*					*			*	*		*	
Stony creek	*					*			+	+		+	
Bull branch	*					*			*	*		*	
Nettle creek - RM 8.2 to the mouth						+			+	+			+
- all other segments		+							+	+			+
Anderson creek						+			+	+		+	

Table 21-1. Use designations for water bodies in the Great Miami river drainage basin.

Water Body Segment	Use Designations												Comments
	Aquatic Life Habitat						Water Supply			Recreation			
	S R W	W W H	E W H	M W H	S S H	C W H	L R W	P W S	A W S	I W S	B W	P C R	
Russell creek	*	+							+	+		+	
Harban creek	*					+			+	+		+	
Hog creek	*	+							+	+		+	
Owens creek	*	+							+	+		+	
St. Paris tributary (Nettle creek RM 8.8)									+	+			+
Dugan run		+							+	+		+	
Muddy creek						+			+	+			+
Spring run	*	+							+	+		+	
Kings creek						+			+	+		+	
Unnamed tributary (Kings creek RM 0.46)						+			+	+		+	
Unnamed tributary (Kings creek RM 4.97)									+	+		+	
Unnamed tributary (unnamed tributary RM 3.18)						+			+	+		+	
Glady creek	*					+			+	+		+	
Mac-a-cheek ditch						+			+	+		+	
West Liberty tributary (Mad river RM 51.06)						+			+	+			+
Mac-o-chee creek						+			+	+		+	
Hefflefinger ditch (Mad river RM 52.23)						+			+	+		+	
Peters ditch (Mad river RM 58.82)						+			+	+		+	

Table 21-1. Use designations for water bodies in the Great Miami river drainage basin.

Water Body Segment	Use Designations												Comments
	Aquatic Life Habitat						Water Supply			Recreation			
	S R W	W W H	E W H	M W H	S S H	C W H	L R W	P W S	A W S	I W S	B W	P C R	
Sugar creek						+		+	+			+	
Stillwater river - at RM 18				+				+	+	+		+	
- Steffen rd. (RM 52.36) to the mouth				+					+	+		+	
- Woodington run (RM 59.13) to Steffen rd.		+							+	+		+	
- headwaters to Woodington run					+				+	+		+	
Unnamed tributary (Stillwater river RM 6.4)		+							+	+			+
Pigeeye creek		+							+	+		+	
Mill creek		+							+	+		+	
Brush creek		+							+	+		+	
Unnamed tributaries			*						*	*		*	
Jones run		+							+	+		+	
Ludlow creek - headwaters to Darke county line (RM 8.0)				+					+	+		+	
- all other segments		+							+	+		+	
Brush creek - RM 0.5 to the mouth	*	+							+	+		+	
- all other segments		+							+	+		+	
Shank ditch		*							*	*		*	
Hog run		+							+	+		+	
Baker ditch							+		+	+		+	

Table 21-1. Use designations for water bodies in the Great Miami river drainage basin.

Water Body Segment	Use Designations												Comments	
	Aquatic Life Habitat							Water Supply			Recreation			
	S R W	W W H	E W H	M W H	S S H	C W H	L R W	P W S	A W S	I W S	B W	P C R		S C R
Feitshams ditch							+		+	+		+		Small drainageway maintenance
Browns ditch									+	+		+		Small drainageway maintenance
Unnamed tributary (Ludlow creek RM 11.8)				+					+	+		+		ECBP ecoregion - channel modification
Rocky run		*							*	*		*		
Opossum run			+						+	+		+		
Canyon run		+							+	+		+		
Painter creek - headwaters to Darke county line (RM 5.5)				+					+	+		+		ECBP ecoregion - channel modification
- Darke county line to the mouth		+							+	+		+		
Little Painter creek				+					+	+		+		ECBP ecoregion - channel modification
Heller ditch				+					+	+		+		ECBP ecoregion - channel modification
Greenville creek - at RM 22.3		+						+	+	+		+		PWS intake - Greenville
- Bridge creek (RM 17.8) to Wildcat rd. (RM 24.6)		+							+	+		+		
- all other segments			+						+	+		+		
McQuay ditch		+							+	+		+		
Poplar ditch		+							+	+		+		
Bolton run		+							+	+		+		
Dividing branch		+							+	+		+		
Bridge creek		+							+	+		+		

Table 21-1. Use designations for water bodies in the Great Miami river drainage basin.

Water Body Segment	Use Designations												Comments		
	Aquatic Life Habitat							Water Supply			Recreation				
	S R W	W W H	E W H	M W H	S S H	C W H	L R W	P W S	A W S	I W S	B W	P C R		S C R	
Mud creek - at RM 0.88		+						+	+	+		+		PWS intake - Greenville	
- all other segments		+							+	+		+			
Bitch run		+							+	+		+			
Lake Branch ditch		+							+	+		+			
Prairie outlet		+							+	+		+			
West branch		+							+	+		+			
Spring branch		+							+	+		+			
Kraut creek		+							+	+		+			
North fork		+							+	+		+			
Dismal creek		+							+	+		+			
Elson ditch		*							*	*		*			
Unnamed tributary (Stillwater river RM 32.6)		+							+	+		+			
Harris run - headwaters to Darke county line (RM 5.2)				+					+	+		+			ECBP ecoregion - channel modification
- all other segments		+							+	+		+			
Ballinger run - headwaters to Darke county line (RM 1.7)				+					+	+		+		ECBP ecoregion - channel modification	
- all other segments		+							+	+		+			
Unnamed tributary (Harris run RM 8.05)		+							+	+		+			
Trotters creek		+							+	+		+			

Table 21-1. Use designations for water bodies in the Great Miami river drainage basin.

Water Body Segment	Use Designations												Comments	
	Aquatic Life Habitat						Water Supply			Recreation				
	S R W	W W H	E W H	M W H	S S H	C W H	L R W	P W S	A W S	I W S	B W	P C R		S C R
Sigmon ditch		+							+	+			+	
Orr ditch		+							+	+			+	
Bennett ditch		+							+	+			+	
Apple ditch		+							+	+			+	
Rudy ditch		+							+	+			+	
Unnamed tributary (Stillwater river RM 38.3)		+							+	+			+	
Swamp creek - headwaters to Pittsenbanger rd. (RM 6.5)					+				+	+			+	ECBP ecoregion - channel modification
- Pittsenbanger road to the mouth		+							+	+			+	
Indian creek - headwaters to Conover (RM 1.93)					+				+	+			+	ECBP ecoregion - channel modification
- all other segments		+							+	+			+	
Unnamed tributary (Swamp creek RM 3.54)					+				+	+			+	ECBP ecoregion - channel modification
Grassy Fork creek					+				+	+			+	ECBP ecoregion - channel modification
Unnamed tributary (Stillwater river RM 51.0)		+							+	+			+	
Unnamed tributary (Unnamed tributary RM 2.5)		+							+	+			+	
Boyd creek					+				+	+			+	ECBP ecoregion - channel modification
Unnamed tributary (Boyd creek RM 2.46)					+				+	+			+	ECBP ecoregion - channel modification
Unnamed tributary (Boyd creek RM 2.67)					+				+	+			+	ECBP ecoregion - channel modification
Unnamed tributary (Stillwater river RM 54.45)					+				+	+			+	ECBP ecoregion - channel modification

Table 21-1. Use designations for water bodies in the Great Miami river drainage basin.

Water Body Segment	Use Designations												Comments	
	Aquatic Life Habitat						Water Supply			Recreation				
	S R W	W W H	E W H	M W H	S S H	C W H	L R W	P W S	A W S	I W S	B W	P C R		S C R
Unnamed tributary (Stillwater river RM 57.2)				+					+	+		+		ECBP ecoregion - channel modification
North fork					+					+	+		+	ECBP ecoregion - channel modification
Sycamore ditch (North fork RM 0.67)					+					+	+		+	ECBP ecoregion - channel modification
Woodington run		+								+	+		+	
Unnamed tributary (Stillwater river RM 60.2)					+					+	+		+	ECBP ecoregion - channel modification
South fork		+								+	+		+	
Unnamed tributary (South fork RM 0.94)					+					+	+		+	ECBP ecoregion - channel modification
Unnamed tributary (Stillwater river RM 64.9)					+					+	+		+	ECBP ecoregion - channel modification
Poplar creek		*								*	*		*	
North creek - headwaters to Dixie road (RM 2.0)							+			+	+		+	Small drainageway maintenance
- Dixie road to mouth (Great Miami river RM 95.8)		+								+	+		+	
Deer Cliff run		+								+	+		+	
Inland tributary							+			+	+		+	Small drainageway maintenance
Cox Airport tributary							+			+	+		+	Small drainageway maintenance
Honey creek – headwaters to Indian creek (RM 3.68)		+								+	+		+	
- Indian creek (RM 3.68) to the mouth				+						+	+		+	
Pleasant run – headwaters to Elizabeth road (RM 0.85)		*								*	*		*	
- Elizabeth road (RM 0.85) to the mouth				+			+			+	+		+	

Table 21-1. Use designations for water bodies in the Great Miami river drainage basin.

Water Body Segment	Use Designations												Comments
	Aquatic Life Habitat						Water Supply			Recreation			
	S R W	W W H	E W H	M W H	S S H	C W H	L R W	P W S	A W S	I W S	B W	P C R	
Indian creek – headwaters to unnamed tributary at RM 2.4 - Unnamed tributary at RM 2.4 to the mouth		+							+	+		+	
Dry creek		+							+	+		+	
West fork		+							+	+		+	
East fork		+							+	+		+	
Lost creek - headwaters to East branch (RM 10.8) - East branch (RM 10.8) to Knoop road (RM 4.3) - Knoop road (RM 4.3) to the mouth		+					+		+	+		+	
Little Lost creek – headwaters to unnamed tributary at RM 2.2 - Unnamed tributary at RM 2.2 to the mouth		*							*	*		*	
Middle branch		+		+					+	+		+	
East branch - headwaters to Loy road (RM 2.0) - Loy road (RM 2.0) to the mouth		+				+			+	+		+	
West branch		+							+	+		+	
Boone creek (Great Miami river RM 103.87)		+							+	+		+	
Peters creek		+							+	+		+	
North branch		+							+	+		+	
B.F. Goodrich ditch							+		+	+			+

Small drainageway maintenance

Table 21-1. Use designations for water bodies in the Great Miami river drainage basin.

Water Body Segment	Use Designations												Comments
	Aquatic Life Habitat							Water Supply			Recreation		
	S R W	W W H	E W H	M W H	S S H	C W H	L R W	P W S	A W S	I W S	B W	P C R	
Spring creek			+						+	+		+	
Garbry creek		*							*	*		*	
Rush creek		+							+	+		+	
Shawnee creek		*							*	*		*	
McKee branch		*							*	*		*	
McIntire run - at RM 0.38		*					o		*	*		*	PWS intake - Piqua
- all other segments		*							*	*		*	
Patterson run		*							*	*		*	
Levering run		*							*	*		*	
Loramie creek		+							+	+		+	
Mill creek		*							*	*		*	
Fox creek		*							*	*		*	
Turtle creek		+							+	+		+	
East Turtle creek		*							*	*		*	
Kiser ditch		*							*	*		*	
Ninemile creek - headwaters to co. rte. 14 (RM 4.2)				+					+	+		+	ECBP ecoregion - channel modification
- all other segments		+							+	+		+	
Painter creek		*							*	*		*	

Table 21-1. Use designations for water bodies in the Great Miami river drainage basin.

Water Body Segment	Use Designations												Comments
	Aquatic Life Habitat							Water Supply			Recreation		
	S R W	W W H	E W H	M W H	S S H	C W H	L R W	P W S	A W S	I W S	B W	P C R	
East Painter creek		*							*	*		*	
Mile creek				+					+	+		+	ECBP ecoregion - channel modification
Spring creek				+					+	+		+	ECBP ecoregion - channel modification
Honsapple ditch		*							*	*		*	
Miami and Erie canal (Loramie creek RM 20.78)				+					+	+		+	ECBP ecoregion - channel modification
Keppler ditch		*							*	*		*	
Clay creek (Applegate ditch)				+					*	*		*	ECBP ecoregion - channel modification
Hulls creek (Fridley ditch)		*							*	*		*	
Mill branch		+							+	+		+	
Brush creek		*							*	*		*	
Tawawa creek - at RM 0.14		+						+	+	+		+	PWS intake - Sidney
- all other segments		+							+	+		+	
Mosquito creek		+							+	+		+	
Leatherwood creek		+							+	+		+	
Plum creek		+							+	+		+	
Manning run		*							*	*		*	
Line run		*							*	*		*	
Counts run		*							*	*		*	

Table 21-1. Use designations for water bodies in the Great Miami river drainage basin.

Water Body Segment	Use Designations												Comments
	Aquatic Life Habitat						Water Supply			Recreation			
	S R W	W W H	E W H	M W H	S S H	C W H	L R W	P W S	A W S	I W S	B W	P C R	
Turkeyfoot creek		*							*	*		*	
Little Turkeyfoot creek		*							*	*		*	
Indian creek		+							+	+		+	
Little Indian creek		*							*	*		*	
Speece & Lovett ditch		*							*	*		*	
Stony creek		+							+	+		+	
Lee creek							+		+	+		+	
Graves creek							+		+	+		+	
McKee creek			+				+		+	+		+	
Bokengehalas creek		+							+	+		+	
Bluejacket creek - headwaters to Opossum run (RM 5.8)							+		+	+		+	
- Opossum run to the mouth		+							+	+		+	
Possum run		+							+	+		+	
Rum creek		+							+	+		+	
Hodge ditch		*							*	*		*	
Howell ditch		*							*	*		*	
Shroyer ditch		*							*	*		*	
Indian creek		*							*	*		*	

Table 21-1. Use designations for water bodies in the Great Miami river drainage basin.

Water Body Segment	Use Designations												Comments
	Aquatic Life Habitat						Water Supply			Recreation			
	S R W	W W H	E W H	M W H	S S H	C W H	L R W	P W S	A W S	I W S	B W	P C R	
Brandywine creek		+							+	+		+	
Muchinippi creek		+							+	+		+	
Calico creek		*							*	*		*	
Little Muchinippi creek		+							+	+		+	
Wolf creek		*							*	*		*	
Baughman ditch		*							*	*		*	
Jackson Center creek				+					+	+		+	ECBP ecoregion - channel modification A site specific copper criterion applies from the point of the "Jackson Center WWTP" discharge (RM 2.3) to the confluence with Little Muchinippi creek. The copper criteria for this reach are determined using the copper criteria equations in this chapter multiplied by a water effect ratio of 3.98 (dissolved copper) and 4.04 (total recoverable copper), rounded to two significant figures.
Willow creek		+							+	+		+	
Rennick creek		+							+	+		+	
Unnamed tributary (Great Miami river RM 157.34)				+					+	+		+	ECBP ecoregion - channel modification
Cherokee Mans run		+							+	+		+	
South fork Great Miami river		+							+	+		+	
New Richland tributary			+						+	+		+	

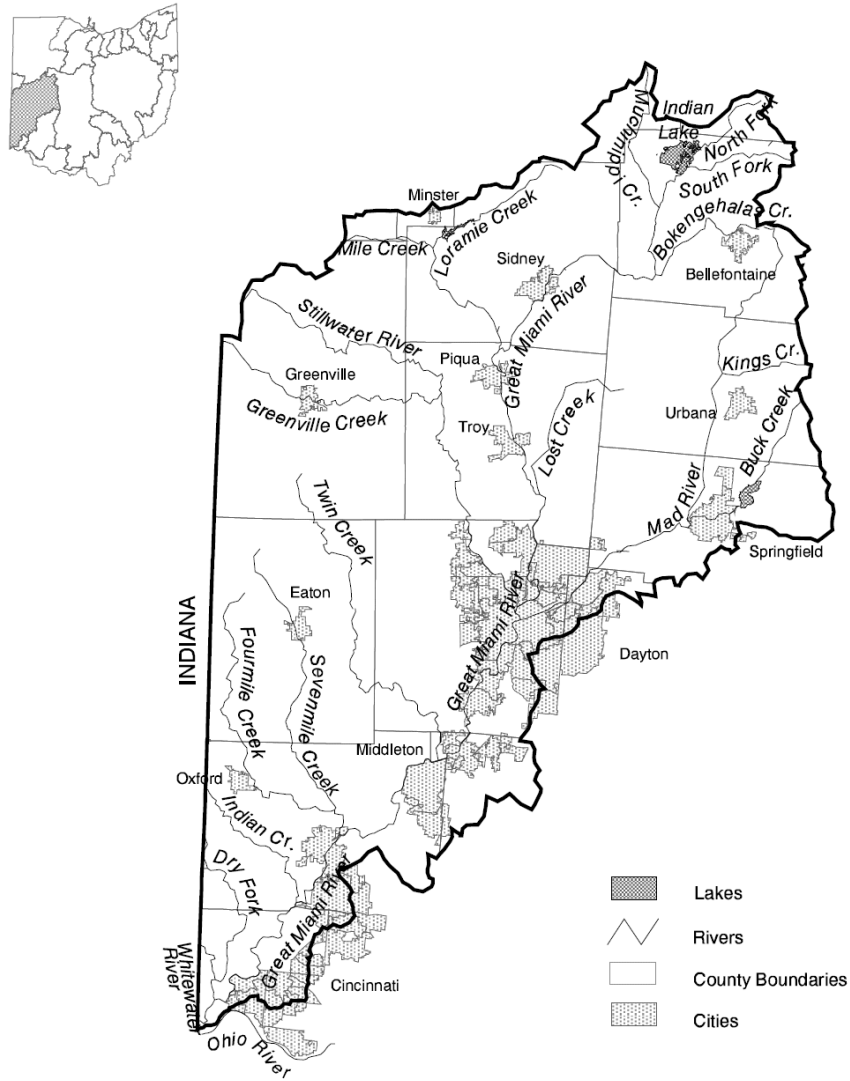
Table 21-1. Use designations for water bodies in the Great Miami river drainage basin.

Water Body Segment	Use Designations												Comments
	Aquatic Life Habitat						Water Supply			Recreation			
	S R W	W W H	E W H	M W H	S S H	C W H	L R W	P W S	A W S	I W S	B W	P C R	
Slow ditch (Liggitt ditch)		+							+	+			+
Belle Center tributary		+							+	+			+
North fork Great Miami river		+							+	+		+	
Blackhawk run		+							+	+		+	
Van Horn creek		+							+	+		+	

SRW = state resource water; WWH = warmwater habitat; EWH = exceptional warmwater habitat; MWH = modified warmwater habitat; SSH = seasonal salmonid habitat; CWH = coldwater habitat; LRW = limited resource water; PWS = public water supply; AWS = agricultural water supply; IWS = industrial water supply; BW = bathing water; PCR = primary contact recreation; SCR = secondary contact recreation.

Appendix

Figure 1. Great Miami river drainage basin.



Effective: 05/22/2017

R.C. 119.032 rule review date: 05/22/2022

Promulgated Under: R.C. 119.03

Statutory Authority: R.C. 6111.041

Rule Amplifies: R.C. 6111.041

Prior Effective Dates: 4/4/1985, 8/19/1985, 4/5/1990, 4/21/1992, 9/30/1993, 4/26/1997, 7/31/1999, 3/29/2001, 7/21/2002, 4/1/2007, 4/23/2008, 6/16/2011, 9/1/2014